



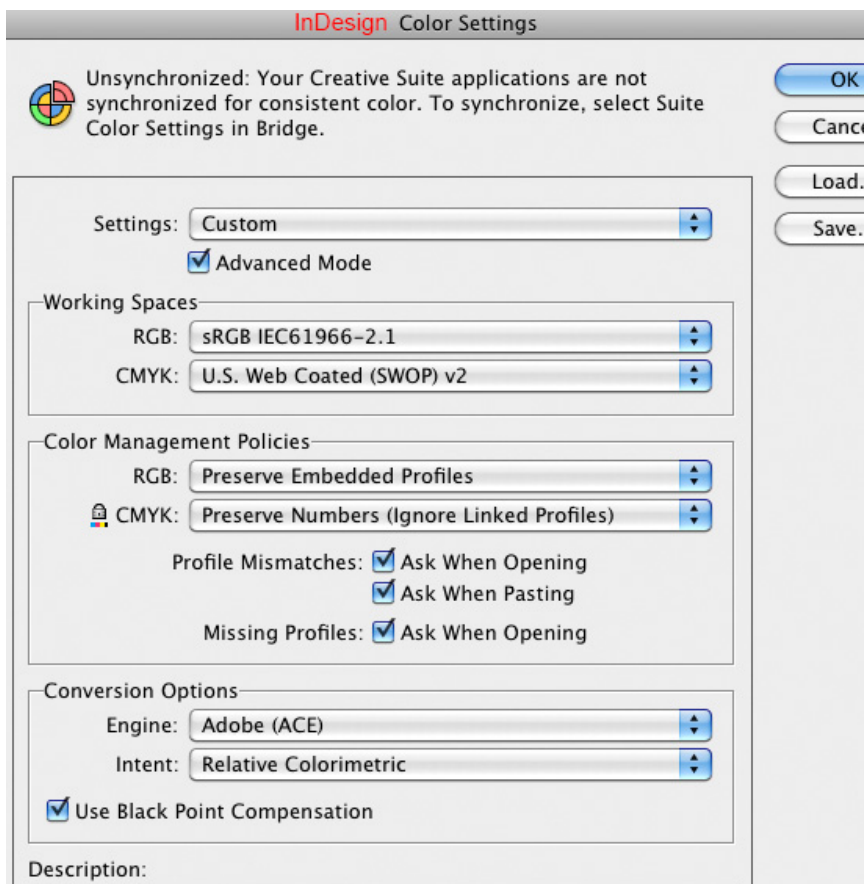
sRGB text: 0/0/255

Test to prove InDesign's Export PDF (Print) strips InDesign's Embedded Profile despite Output: "Include Tagged Source Profiles."

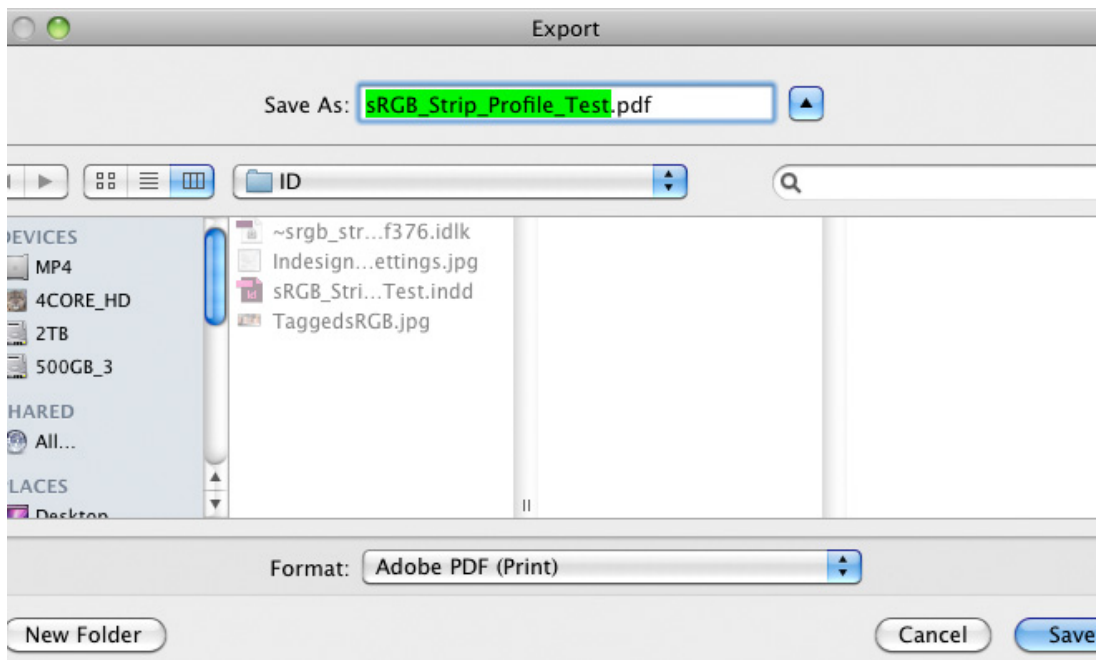
sRGB box filled: 180/180/180

Expected results: Image, text and box will retain embedded profile on Export (but profiles were stripped as proved #6 screenshot).

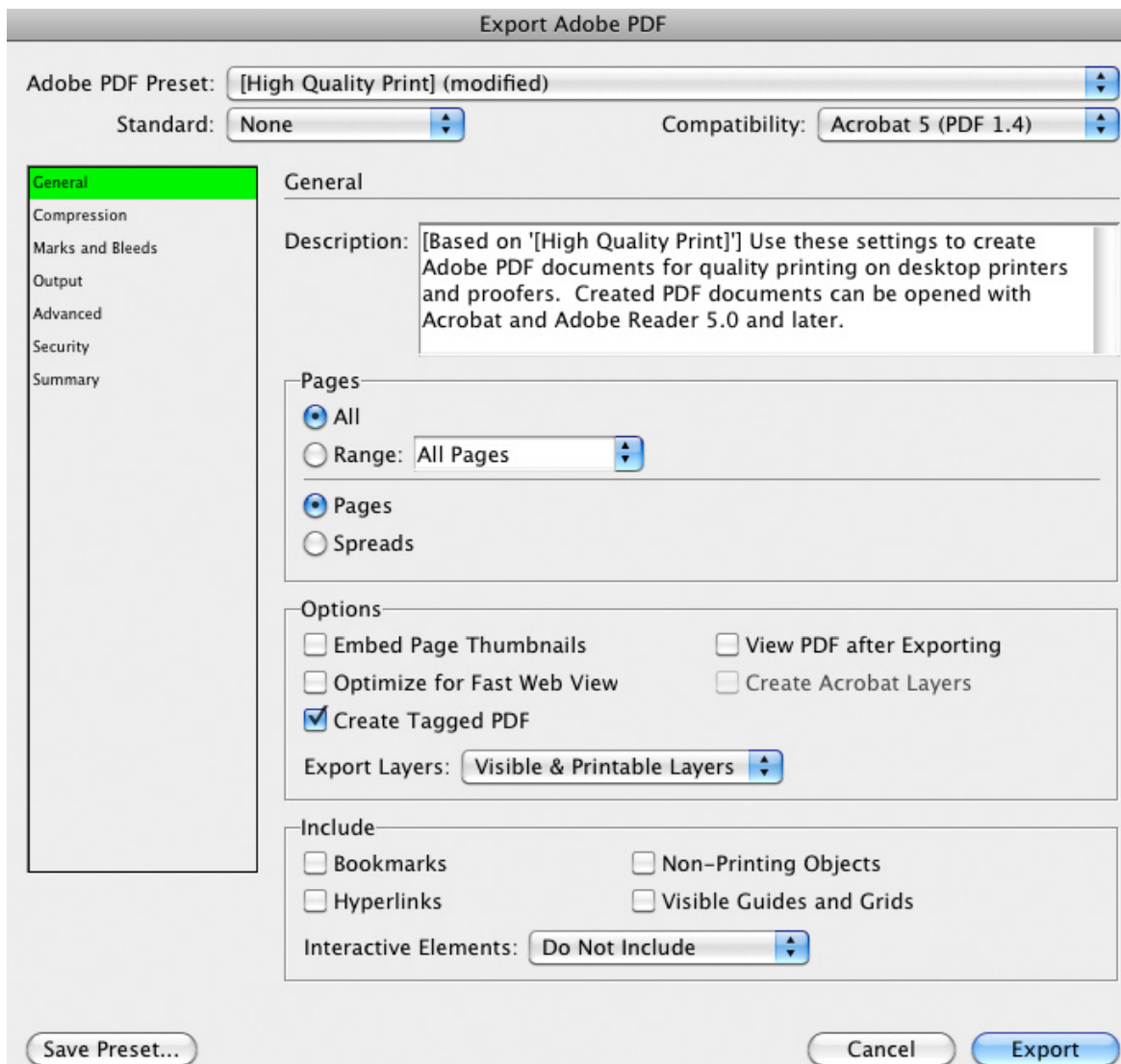
## 1) Set InDesign to Working RGB: sRGB



## 2) File Export PDF (Print)



## 3) General



## 4) Compression

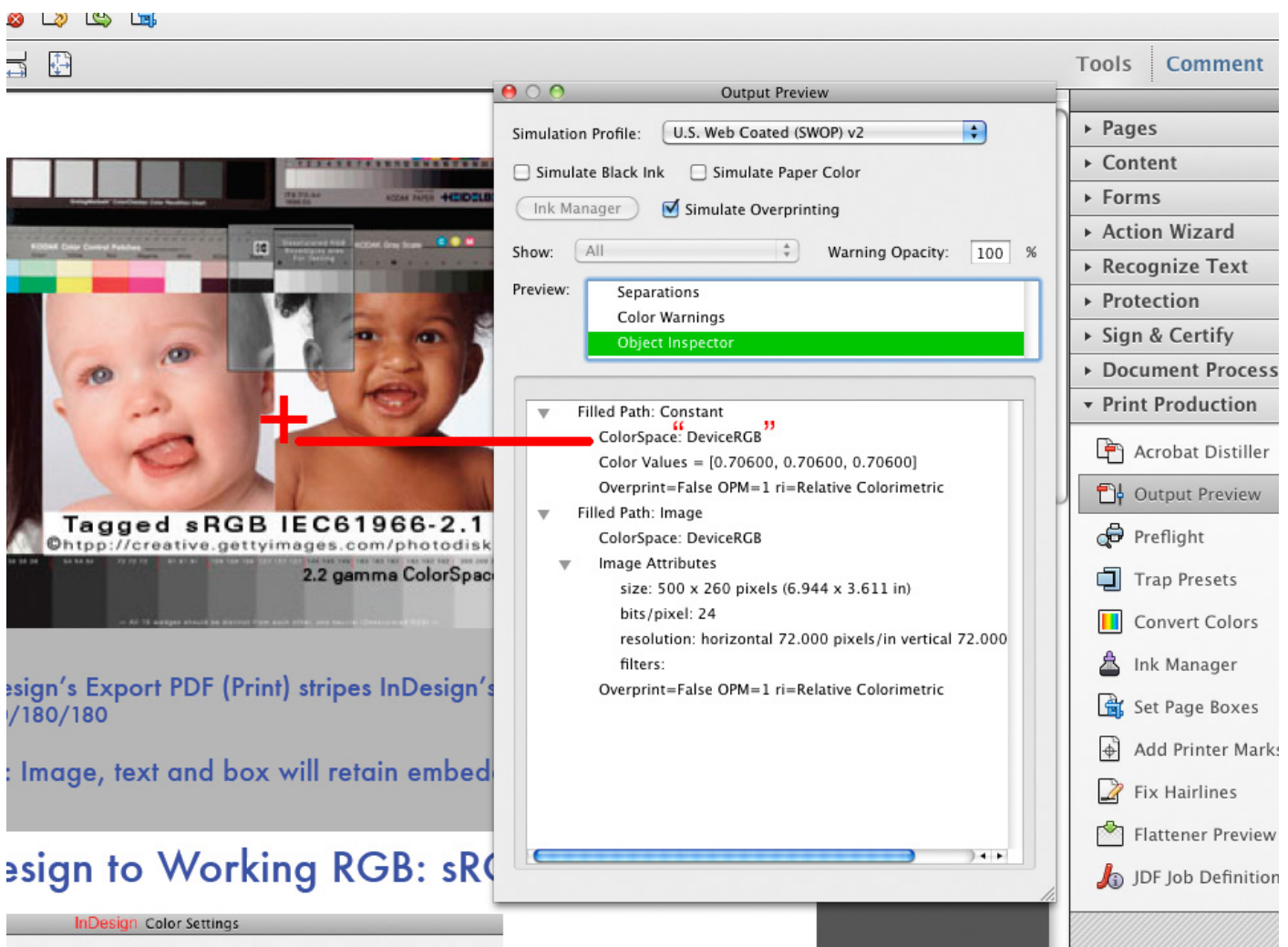
The screenshot shows the 'Export Adobe PDF' dialog box with the 'Compression' tab selected. The 'Adobe PDF Preset' is '[High Quality Print] (modified)', 'Standard' is 'None', and 'Compatibility' is 'Acrobat 5 (PDF 1.4)'. The 'Compression' section is divided into three categories: Color Images, Grayscale Images, and Monochrome Images. Each category has a 'Do Not Downsample' dropdown set to '300 pixels per inch', a 'for images above' dropdown set to '450 pixels per inch', a 'Compression' dropdown set to 'None', and an 'Image Quality' slider. The 'Monochrome Images' section also has a 'for images above' dropdown set to '1800 pixels per inch'. At the bottom, there are checkboxes for 'Compress Text and Line Art' and 'Crop Image Data to Frames', both of which are unchecked. Buttons for 'Save Preset...', 'Cancel', and 'Export' are visible at the bottom.

## 5) Output

The screenshot shows the 'Export Adobe PDF' dialog box with the 'Output' tab selected. The 'Adobe PDF Preset' is '[High Quality Print] (modified)', 'Standard' is 'None', and 'Compatibility' is 'Acrobat 5 (PDF 1.4)'. The 'Output' section is divided into three categories: Color, PDF/X, and Description. The 'Color' section has a 'Color Conversion' dropdown set to 'No Color Conversion', a 'Destination' dropdown set to 'N/A', a 'Profile Inclusion Policy' dropdown set to 'Include Tagged Source Profiles', and a 'Simulate Overprint' checkbox which is unchecked. There is an 'Ink Manager...' button. The 'PDF/X' section has an 'Output Intent Profile Name' dropdown set to 'N/A', and three text input fields for 'Output Condition Name', 'Output Condition Identifier', and 'Registry Name', all containing 'N/A'. The 'Description' section has a text area with the instruction 'Position the pointer over a heading to view a description.' Buttons for 'Save Preset...', 'Cancel', and 'Export' are visible at the bottom.

# THE PROOF: Image, Box, Text are "DeviceRGB" the profiles were not "included"

See Output #5 Profile Inclusion Policy: "Include Tagged Source Profiles" (clearly not happening).



test by G BALLARD: [www.gballard.net](http://www.gballard.net)  
March 13, 2013